

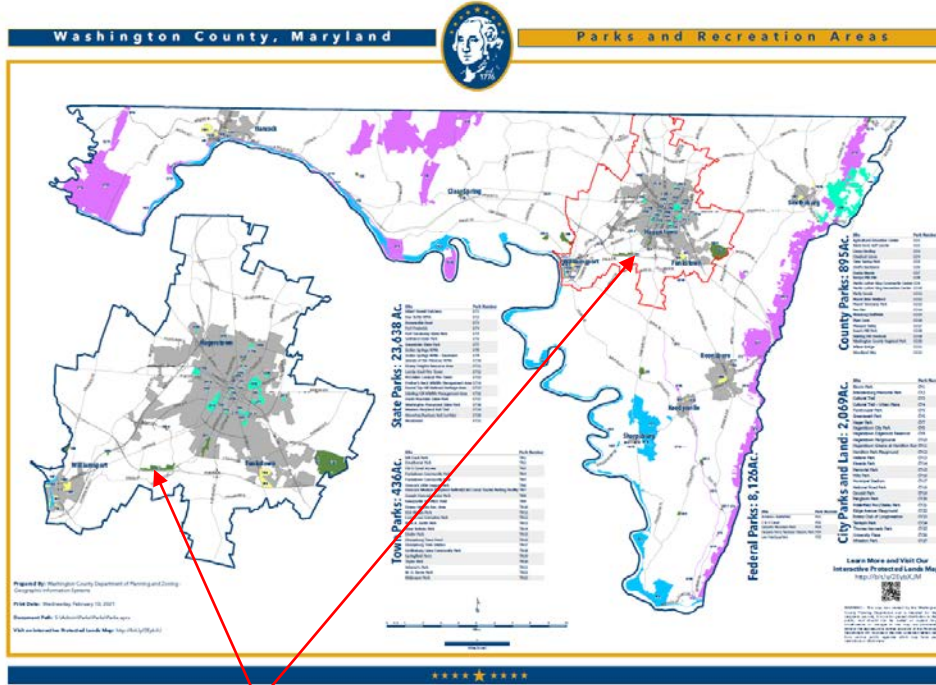


CEAM Conference September 29, 2022

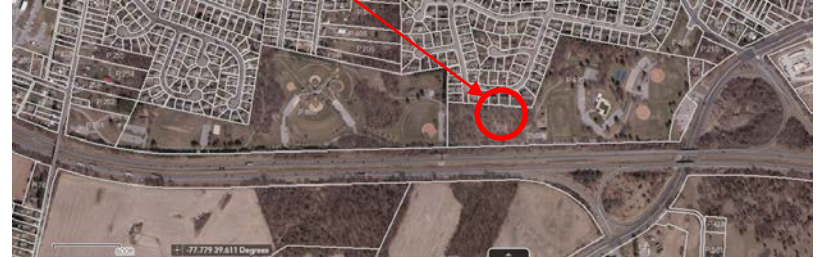
Washington County, Maryland
Small Project of the Year

Andrew Eshleman, PE
Public Works Director
0.5 PDH

Washington County, Maryland Marty's Mythical Woods



Project Location



Marty Snook Park



THE PROBLEM – EMERALD ASH BORER

- The walking trail in Marty Snook Park goes through a stand of woods with many large ash trees that were recently killed by the emerald ash borer.
- Paid a tree service to drop many of the large trees along the fence and property line. Many others scattered in the woods and along the trail.
- To remove those trees and others would drastically open the woods and change the landscape.



Felled Ash Trees



SOLUTION

- Create a new play area in the woods!
- Planned to replace playground equipment in park.
Had approximately \$45,000 in State Program Open Space funds available in a grant.





IDEAS AND RESEARCH

Limited budget + imagination + free materials + in house resources = ???





PROJECT DEVELOPMENT

- In House Work
 - Develop theme
 - Get clearance from insurance provider
 - Most playground injuries are the result of falls. Lowering fall heights and providing suitable fall protection surfacing is key.
 - Early studies show that Natural Playgrounds are the same or safer than traditional manufactured playgrounds as the worst injuries often happen from unintended use of the equipment. (i.e. climbing on top of monkey bars, jumping from swings, etc.)
 - Insurance provider required a design professional or certified manufacturer to be responsible for any structures
 - Field survey
 - Site and playground equipment design
 - Site clearing
 - Construction and material sourcing
- Hire an Artist
 - Produce unique carvings and playground pieces from available trees
- Playground equipment and material suppliers
 - Stand alone playground parts to be integrated into the construction



PROJECT DEVELOPMENT – ARTIST CHAINSAW CARVER RFP

- Drafted a Request for Proposal regarding qualifications and experience and price proposals for the design, creation and construction of carved wooden playground structures.
 - *Seeking an Artist to assist with the creation of the natural playground area with a special focus and ability to create original chain saw carved playground elements that can be built and incorporated into the space. The Artist will collaborate with the County to design, create and construct the features of the playground.*
 - Provided a sample structure element list. Artist shall collaborate with the County on preparing a schematic design for each play element.
 - Each structure designed and constructed to meet the US Consumer Product Safety Commission Standards for Public Playground Safety. Need to be durable and able to withstand climbing, pulling, pushing, and the natural elements.



PROJECT DEVELOPMENT – ARTIST CHAINSAW CARVER RFP

The following criteria may be considered when evaluating the qualifications and experience of the Artists who have submitted proposals. This list is in general and not specific nor limited to these items:

- A. Quality and completeness of the proposal document submitted (1 -10 pts.)
- B. Completeness and creativity in the concept of the project (1- 10 pts.)
- C. Demonstrated ability to perform the project in portfolio of representative work (1 – 10 pts.)
- D. Demonstrated experience in working with municipal and public projects (1 – 5 pts.) 1 pt. for each project, no more than 5 pts. Possible.
- E. Ability to meet expected project schedule and completion time (1 – 5pts.)
- F. Satisfies equipment and material needed to perform task (1 -5 pts.)
- G. Geographical relationship to Washington County, MD (1 - 10 pts.) Washington County 10pts., 0-30 miles 8 pts., 30 -90 miles 6 pts., 90-250 miles 4 pts., 250-500 miles 2pts., 500+

PRICE MATRIX			
Job Classification	Hourly Rate from Proposal Form ^{[1][4]}	Number of Hours for Respective Classification ^[2]	Price Extended (rate x hours)
Artist (Design)		40	\$
Artist (Carving / Construction)		240	\$
Artist (Onsite Sawmill Processing)		16	\$
Total Proposal Value ^[3]			\$

1. Hourly rate as written on the proposal form Attachment "A". In the event of a transposing or computation error on this form the hourly rate indicated on the Proposal Form (Attachment A) applied to the designated number of hours per job classification will be the prevailing price.

2. Estimation of the number of hours used for deriving a lowest cost proposal. These values in no way indicate or should be construed to indicate a minimum number of actual billable hours anticipated in this contract. These values are for the sole purpose of estimating and comparing price proposals.

3. A zero (\$0) or blank hourly rate for any job classification will be considered non-responsive.



Chain Effect – Jason Stoner

- Contract hourly rate not to exceed \$35,000; final cost \$20,000





BASE DESIGN AROUND WHAT THE SITE HAS TO OFFER

Site Selection

- Interesting terrain and features.
- Strengthen ties to the natural environment
- Use onsite materials



Single Boulder Climbers

\$6,483 – \$12,183

Age Group: All Ages

Boulder climbers are a natural way to bring gross motor play to your spaces. We offer single boulder climbers, double boulder climbers and triple boulder climbers. These climbers do not come with nets or ship ropes, but are stand-alone boulder climbers. We offer a private use and public use versions of these climbers.

OPTIONS

CLEAR

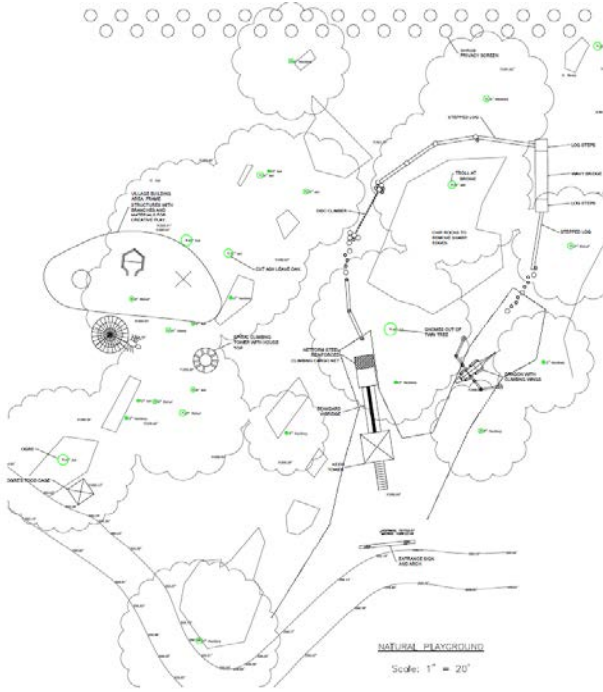
\$12,183

[Twitter](#) [Facebook](#) [Pinterest](#) [Email](#)





PROJECT DEVELOPMENT – SITE DESIGN AND CLEARING





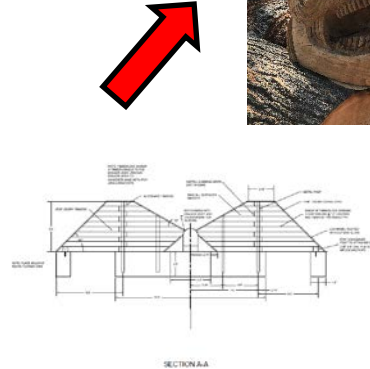
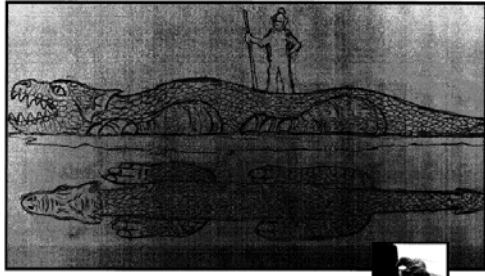
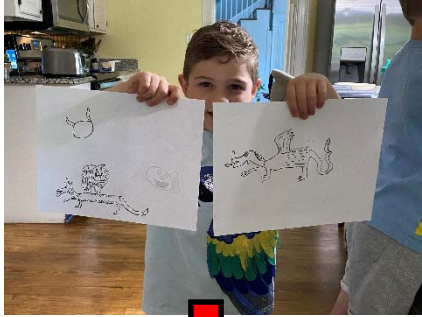
PROJECT DEVELOPMENT – MATERIAL SOURCING

- Raw Timber
 - Ash trees for carvings on stump
 - Logs - Preferred Species
 - Black locust – *robinia pseudoacacia*
 - Free from DNR Indian Springs Wildlife Management Area
 - Industry standard preferred species for wood structures
 - White Oak – *quercus alba*
 - Free from County Parks property killed by disease
- Square locust posts from fence supply company
- Dimensional cedar from local lumber company
- Playground elements by InCord, Huck and Farmtastic Fun, Treehouse Supplies and Amazon vendors





PROJECT DEVELOPMENT – DRAGON PLAY STRUCTURE



PLAN VIEW
SECTION A-A
DRAGON CLIMBING STRUCTURE
SCALE: 1" = 5'



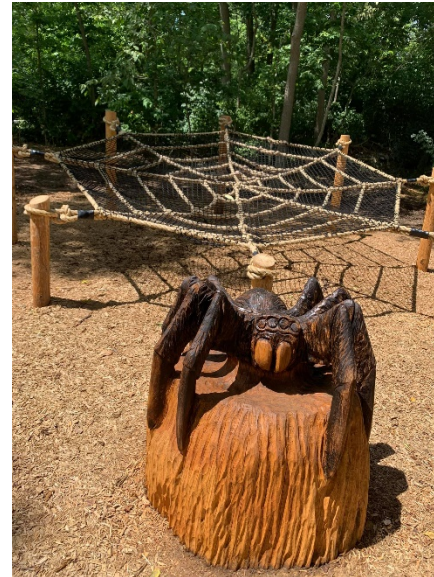
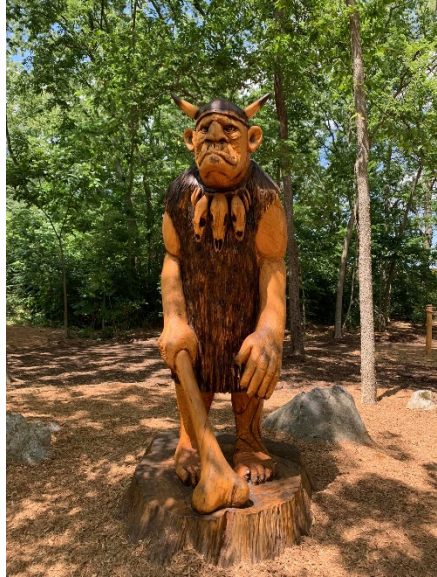


PROJECT DEVELOPMENT – CLIMBING SCULPTURE





PROJECT DEVELOPMENT – STUMP CARVINGS





PROJECT DEVELOPMENT – FORT



Washington County, Maryland
Marty's Mythical Woods



Washington County, Maryland Marty's Mythical Woods







Thank You and Questions?

- Washington County Public Works
Departments involved in the construction project
 - Highways, Parks & Recreation,
Buildings-Grounds-Facilities
- Washington County Public Relations and Marketing
 - Rules sign graphics
- Jason Stoner – Chain Effect, Fairfield, PA
 - Chainsaw Art & Creative Signs
- DNR and Program Open Space ~\$45,000 grant
 - Total Project Direct Costs ~\$60,000



Andrew Eshleman, P.E.
Director, Public Works
Washington County, MD
aeshleman@washco-md.net
240.313.2252

Follow Us:



WashingtonCountyMD



@WashingtonCoMD



WashingtonCountyMD